

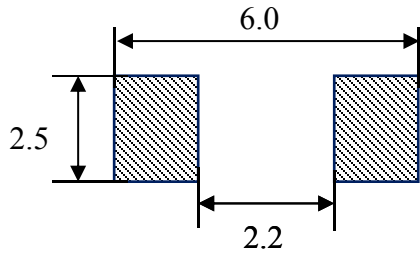
Revision Record					
Control No.	Revision	Description	Date	Drawn	Approved
	A0	I TMA -0530-4R7-M	2018/10/23	H	R
	A1	A TMA -0530-100-M	2018/10/29	H	R
	A2	A TMA -0530-1R0-M	2018/11/14	H	R
	A3	A TMA -0530-R33-M TMA -0530-R68-M TMA -0530-2R2-M TMA -0530-3R3-M TMA -0530-6R8-M	2018/11/21	H	R



DCR

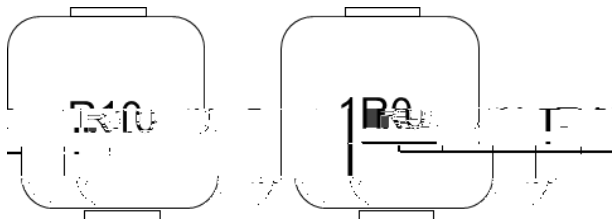
- H
- H (l )
- R HS 9

**Recommend Land Pattern Dimensions**



**Marking**

- T 3-
- F : 1R0 1.0 H, R10 0.1 H.



Inductance:  
1.0 $\mu$ H

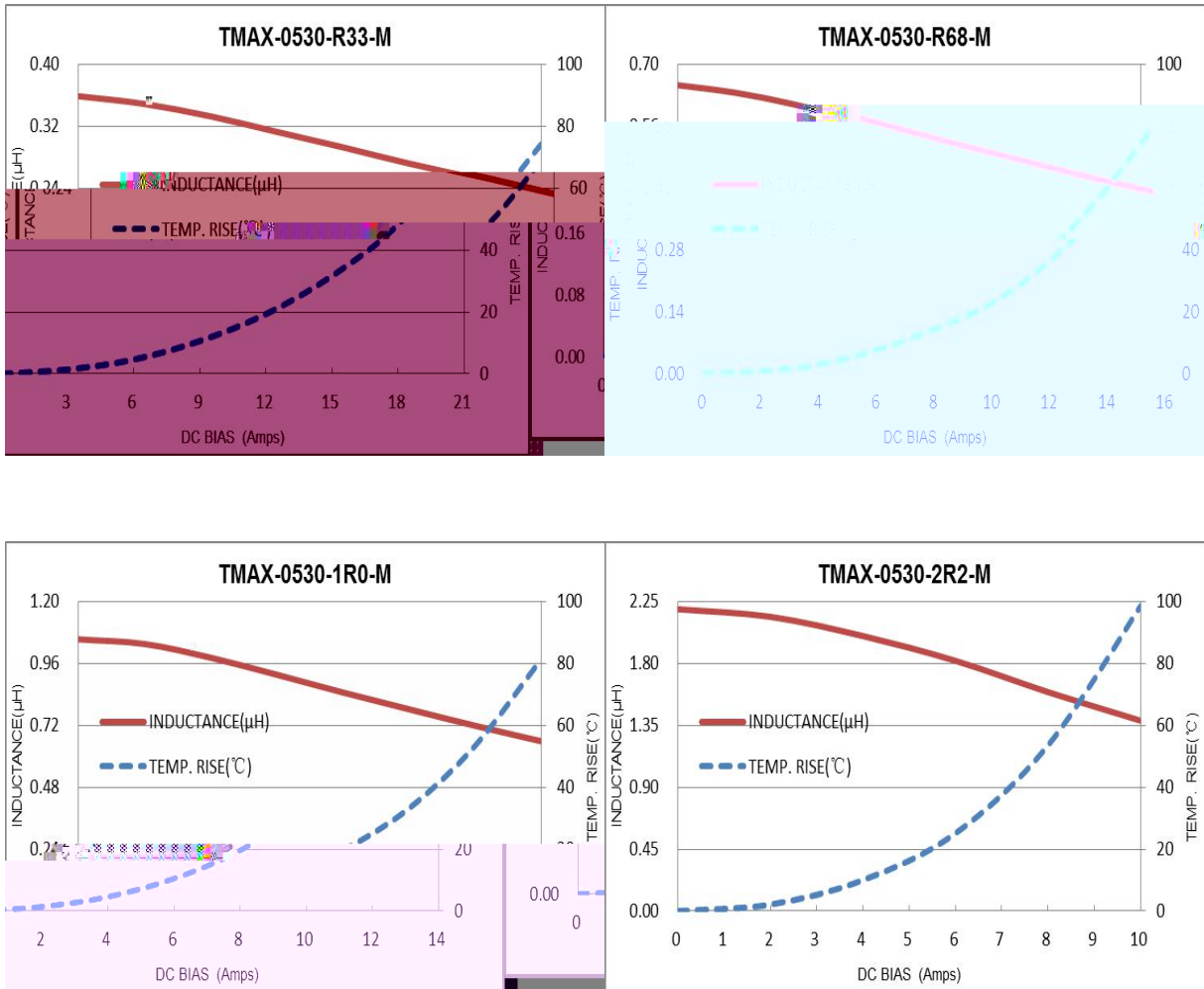
**Specifications**

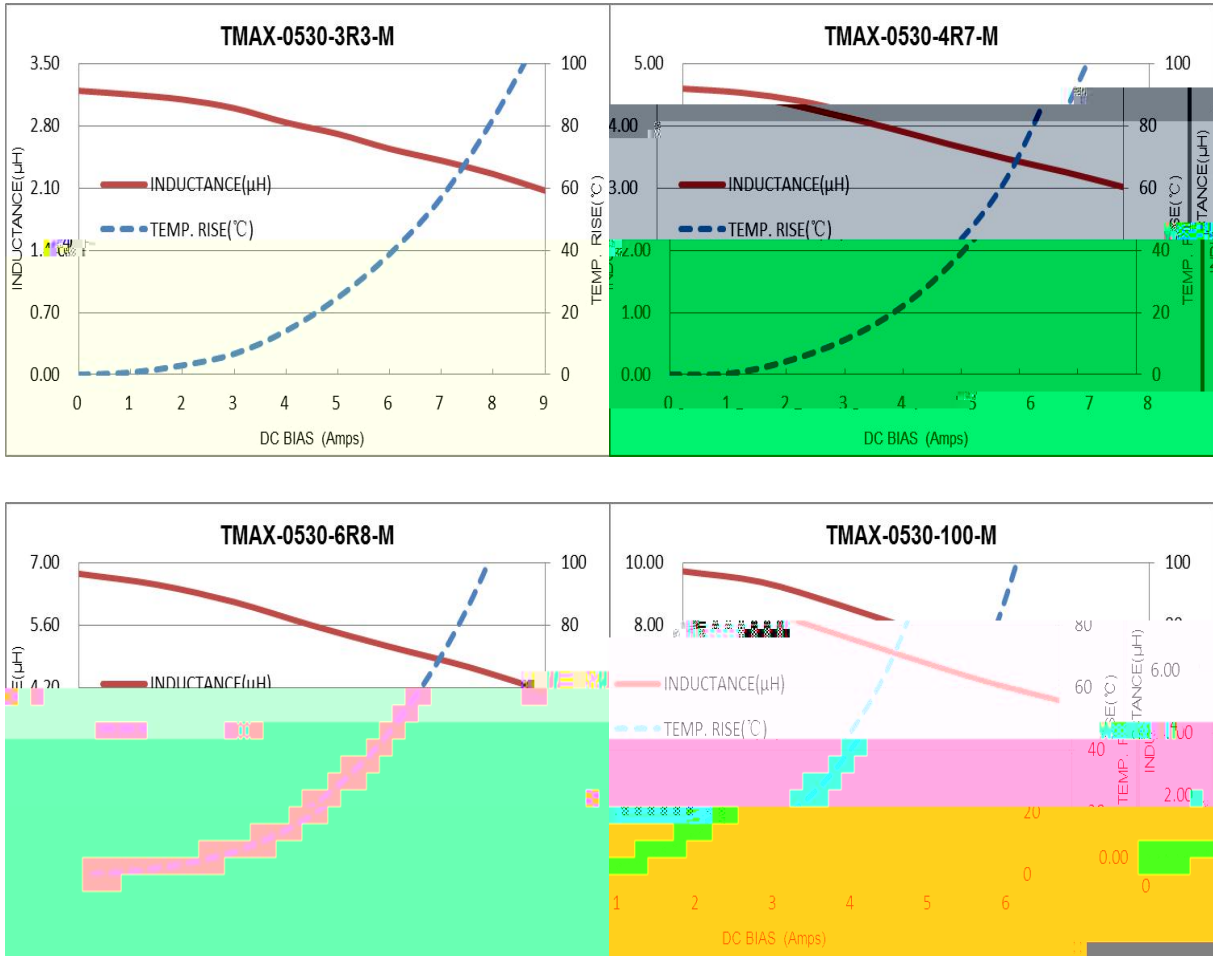
Part No.	Inductance		DCR (m )		Saturation Current	Heat Rating Current
	L <sub>0</sub> ( $\mu$ H)	Tolerance	Typ.	Max.	Isat (Amps.)	Idc (Amps.)
					Typ.	Typ.
TMA -0530-R33-M	0.33	20%	4.55	5.15	19	14
TMA -0530-R68-M	0.68	20%	9.0	10.0	13	11
TMA -0530-1R0-M	1.0	20%	12	13.5	11	9.0
TMA -0530-2R2-M	2.2	20%	25	29	9.0	6.5
TMA -0530-3R3-M	3.3	20%	33	38	8.0	5.5
TMA -0530-4R7-M	4.7	20%	51	60	6.0	4.5
TMA -0530-6R8-M	6.8	20%	80	90	4.5	3.5
TMA -0530-100-M	10.0	20%	110	125	4.0	3.0

**Notes:**

1. A 23 3 C 45%RH 70%RH
2. T I : 3260B LCR M , 3265B B C S (100 H , 1 ), EUCGE-DC L
3. O - 55 C + 125 C ( + - ) .
4. I : DC (A) L<sub>0</sub> 30 %.
5. I : DC (A) T 40 C.
6. T ( + ) 125 C . C , , P B , P
7. T

**Inductance and Temperature Rise vs. DC Current**





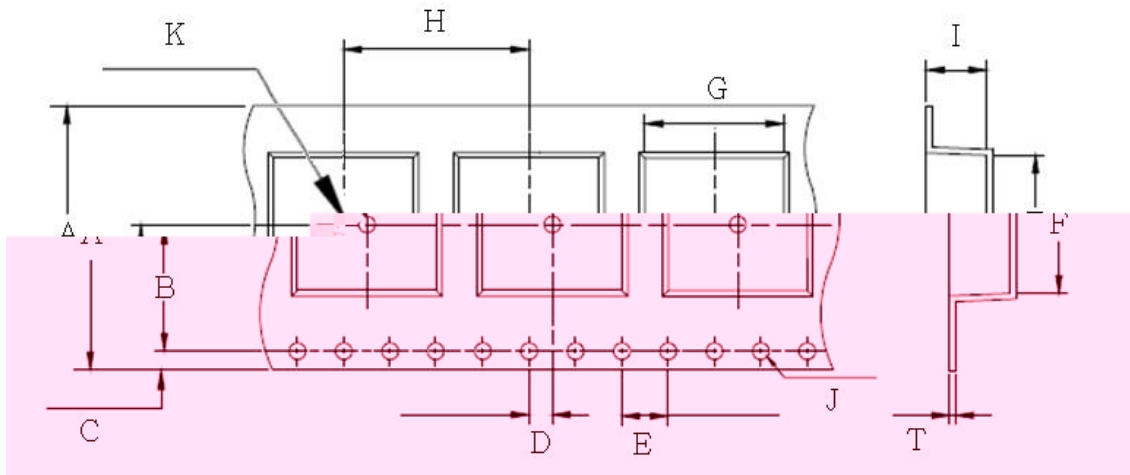
**Reliability:**

Item	Test Method	Specification and Requirement
S	S : 1.P : 160 ± 10 C 90 2.R : 245 ± 5°C 2 ± 0.5	T  95%
	1. (10H 55H 1) 2. 2 3.A : 1.5	L/L <sub>0</sub> ± 5%  N
S	1.P : 100 G 2.D : 11 3.3  3	

**Reliability:**

Item	Test Method	Specification and Requirement
T S	1.R 100 : (-55 ± 2 C, 30 ± 3 ) → (R , 5 ) → (+125 ± 2 C, 30 ± 3 ) → (R , 5 ) 2.R : 48 + 4 / - 0	L/L <sub>0</sub> ± 5%  N
H T R	1.E T : 85 ± 2 C 2.A C : R 3.D : 1,000 + 4 / - 0	
H R	1.E T : 60 ± 2 C 2.R H : 90 95% 3.D : 1,000 + 4 / - 0	
L T S	1.S : -55 ± 2 C 1,000 + 4 / - 0	
H T S	1.S : +125 ± 2 C 1,000 + 4 / - 0	

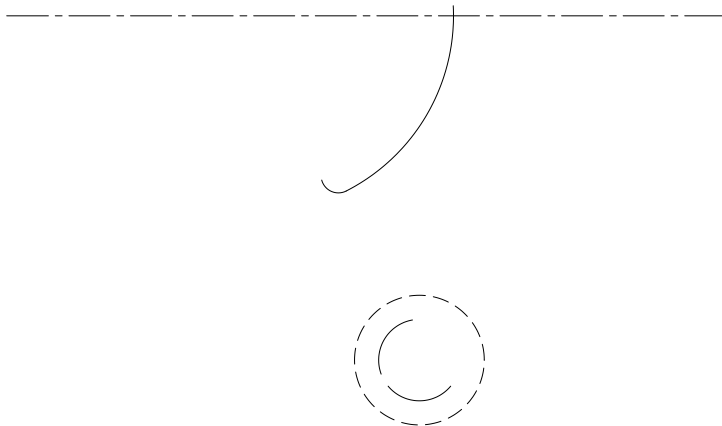
**Packaging Dimensions**



G	F	I	T	H	A
5.4 ± 0.1	5.8 ± 0.1	3.5 ± 0.15	0.35 ± 0.05	8.0 ± 0.1	12 ± 0.2
J	K	D	E	B	C
1.5 ± 0.1	1.5 ± 0.1	2.0 ± 0.1	4.0 ± 0.1	5.5 ± 0.1	1.75 ± 0.1

**Reel Dimensions**

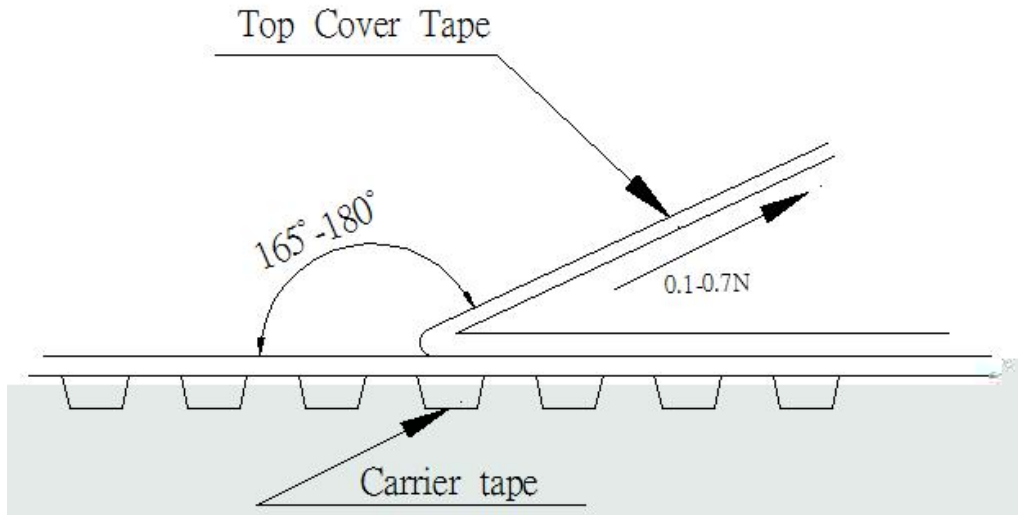
A	B	C
12.5 ± 0.2	2.0 ± 0.2	B



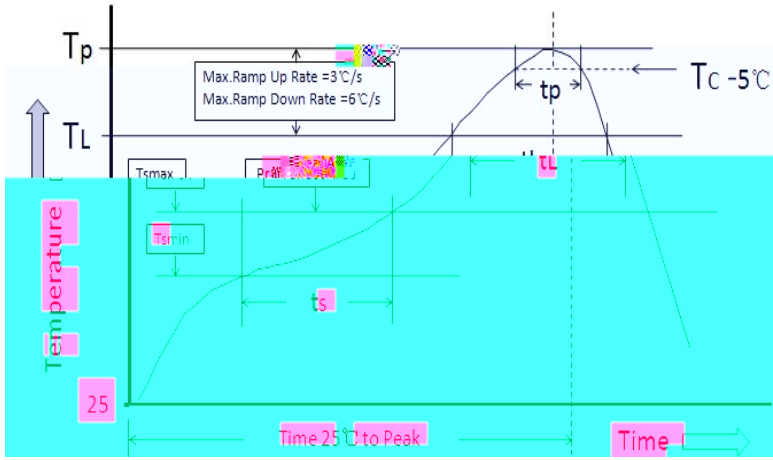


**Peeling of top cover tape**

- T 300 / .
- T 0.1 0.7 N.



**Reflow Profile**



**Table1-StandardSnPb Solder( $T_c$ )**

Package Thickness      Volume mm

apping

---

**Care note for Safety**

➤ P A C  
T

, - - , .T ,  
, ,  
, ,  
, .  
/ .

➤ T R  
T  
.I

➤ D S  
D

➤  
T

➤ P  
I

.P .

➤ D  
P

➤ N  
T

( , , ) ..TDG H C .,L .  
-  
.I ,